



ConVA

Media Control System

 **Easy To Use Media Software!**

Take Control of your Presentation Equipment



The **ConVA** Media Control System by Dukane offers a unified approach to operate and assess the various multimedia equipment found in today's classrooms and training rooms. The non-proprietary software application serves as a foundation for controlling existing multimedia systems as well as future equipment upgrades.

ConVA is installed and run on your existing PC thus eliminating the need for additional expensive hardware. Call today and let us configure a ConVA Media Control System that is right for you.

- Control all your presentation equipment from one computer including projectors, document cameras, DVD/VCR players, and more
- Schedule events like Watch TV or Power Off for one room or an entire building
- Monitor equipment usage such as projector filter and lamp hours for organized maintenance and planned purchasing
- Assess how often technology is being utilized in the classroom with unique logging features and usage reporting capabilities



Control



Schedule



Monitor



Assess

Audio Visual Products

ConVA

Media Control System

 **Easy To Use Media Software!**

ConVA Media Control System is a Windows based software product that controls any type of AV equipment with a unified "Activity" based approach. Users don't just control the DVD player and Projector; instead they "Watch the DVD". The ConVA application does the work and presents to the user a set of controls appropriate for the activity.

Built on .NET framework, ConVA is easily configurable and enables control of any device that uses an IR remote, has an RS-232 connection, a LAN port, or any other control interface. This includes projectors, cameras, VCR's, DVD players and various other controllable devices including motorized screens or room lighting.

There are currently two versions of ConVA. The "Presenter" edition, and the "Administrator" edition. Based on your requirements ConVA provides your staff the ability to monitor, review, and control one room or an entire campus of buildings and rooms from a single PC. Full control of all the "room" system functions such as projector power on/off, volume, lamp life readings, etc. are possible. ConVA enables centralized equipment fault and maintenance messages and alerts. Any activity can be scheduled on a calendar basis for any room or group of rooms.

	Presenter	Administrator
Room Control of all AV Devices	X	X
Usage Log Data	X	X
Individual Room Scheduling	X	X
Entire Building Scheduling		X
Building Inquiry		X
Building Control of all AV Devices		X
Access Level Security Features		X
Media Asset Usage Reporting	(optional upgrade)	(optional upgrade)

In addition, comprehensive, time-stamped logs of every control action are available for operational analysis. This unique feature allows administrators to correlate technology usage with performance like never before. For example, in a classroom setting you are now able to assess how various teaching methods and the use of multimedia equipment affect students' test scores.

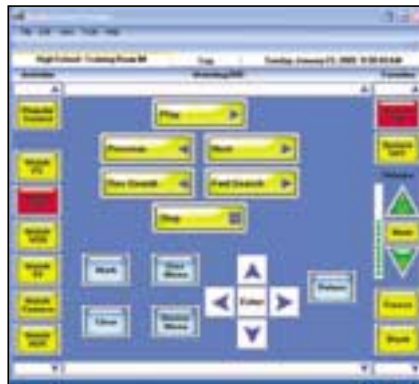
Audio Visual Products

brought to you by **DUKANE**

Tomorrow's Solution Today!

Hardware Requirements:

Based on your individual configuration, the ConVA Media Control System requires at least one network control adapter which sends and receives control commands to and from the various audio visual devices in your configuration. The network control adapter connects a network utilizing TCP/IP to infrared (IR), serial, and relay communications, including sensor inputs that can interrupt or be polled by another network device. There are several hardware options depending on the complexity of your system. The standard network control adapter includes a power input, network connection, serial port, and three independent IR outputs or sensor inputs.



System Requirements:

- Microsoft Windows, XP or later version with .NET framework installed
- 800 MHz processor (1.5GHz recommended)
- 256 MB RAM (512 MB recommended)
- 40 MB of hard-disk space for program installation